



SSS Speedster 600

(Model SP-600, #56001)

SSS Speedster 1000

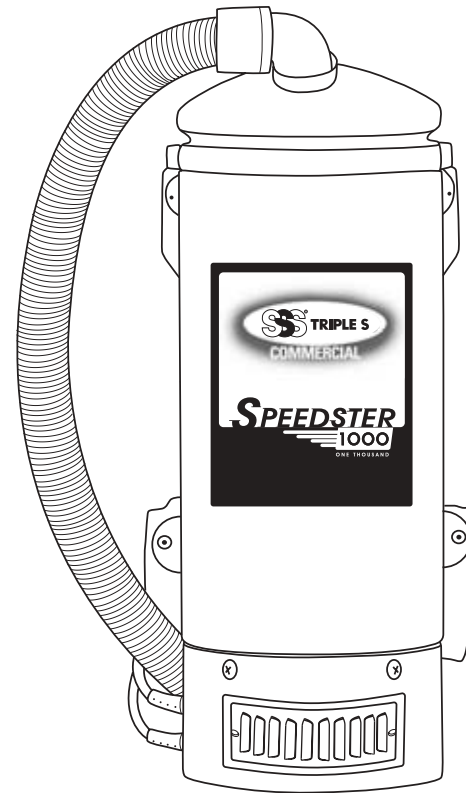
(Model SP-1000, #56003)

OPERATION

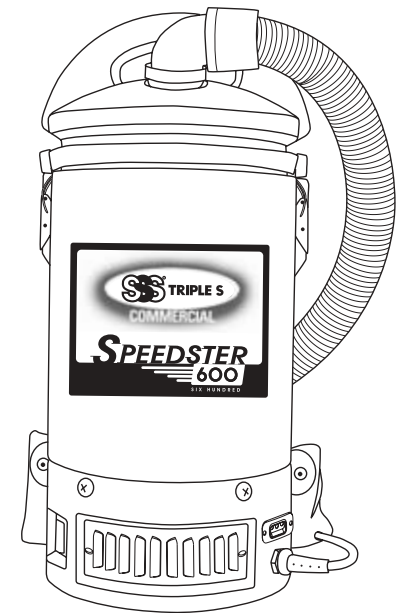
SERVICE

PARTS

CARE



SSS Speedster 1000



SSS Speedster 600

For your convenience record this important information:
Serial Number: _____ Date of Purchase: _____

TABLE OF CONTENTS

INTRODUCTION

Inspection, Warnings, Motor, Electrical, Grounding Instructions2

SAFETY INSTRUCTIONS

Warnings3

OPERATION

Preparing the SSS Speedster 600 and SSS Speedster 1000 for Operation4

Electrical Cord Care, Proper Storage, Proper Vacuuming Motion
for Large Areas, Ergonomics, Caring for Your Vacuum5

PREVENTIVE MAINTENANCE

Troubleshooting6

FILTER MAINTENANCE.....7

SSS SPEEDSTER 1000 ASSEMBLY8

SSS SPEEDSTER 1000 PARTS LIST9

SSS SPEEDSTER 600 ASSEMBLY10

SSS SPEEDSTER 600 PARTS LIST11

WARRANTY INFORMATION12

INTRODUCTION

INSPECTION

Carefully unpack and inspect your new vacuum for shipping damage. Each unit is tested and thoroughly inspected before shipping. For instructions regarding any shipping damage, contact your Triple S distributor immediately. All returns must have a Return Authorization Number (RAN).

WARNINGS

- ◆ **DO NOT** vacuum with a frayed, worn, or damaged cord.
- ◆ **DO NOT** vacuum liquids or expose the vacuum to rain or water.
- ◆ **DO NOT** vacuum hazardous or toxic materials.
- ◆ **DO NOT** use to pick up flammable or hazardous materials.

MOTOR

Electric thru-flow vacuum motors must never be used in applications in which wet or moist conditions are involved, where dry chemicals or other volatile materials are present, or where airflow may be restricted or blocked. Such motors are designed to permit the vacuumed air to pass over the electrical wiring to cool it. Therefore, any liquid (including water), dry chemical, or other foreign substance that would come in contact with electrical conductors could cause combustion (depending on volatility) or electrical shock. Failure to observe these precautions could result in property damage and severe personal injury, including death in extreme cases.

ELECTRICAL

Excluding the 220 V motors, vacuum motors operate on a standard 120 volt, 60 Hz, AC circuit. Severe changes in voltage, high or low, can cause damage to the motor and premature motor failure. Model numbers and specifications can be obtained by calling your Triple S distributor.

GROUNDING INSTRUCTIONS—COMMERCIAL-RATED UNITS

COMMERCIAL-RATED VACUUMS MUST BE GROUNDED. If the vacuum should malfunction or stop working, grounding provides a path of least resistance for electrical current, thereby reducing the risk of electrical shock. This unit is equipped with a cord that has an equipment-grounding conductor and grounding plug. The plug must be inserted in an appropriate outlet that is properly installed and grounded in accordance with all local codes and ordinances. Cutting off the ground wire or using a cord that is not equipped with a ground plug will void the warranty on the unit, and Triple S will accept NO liability associated with the unit.

Improper connection of the equipment-grounding connector conductor can result in a risk of electrical shock. Check with a qualified electrician or service person if you doubt that the outlet is properly grounded. Do not modify the plug provided with the vacuum. If it will not fit the outlet, have a proper outlet installed by a qualified electrician.

SAFETY INSTRUCTIONS

WARNING

To reduce the risk of fire, electric shock or injury, read the following:

1. Do not leave any vacuum plugged in when not in use. Unplug it from the outlet when the unit is not in use and before servicing.
2. Do not use outdoors or on wet surfaces.
3. Do not try to recover any liquid with this vacuum. This vacuum is for DRY RECOVERY only.
4. Use only as described in this manual. Use only manufacturer's recommended attachments and replacement parts.
5. On commercial units with 18" power supply cords: To prevent electrical damage, use the recommended 50 foot/16 gauge extension cord provided. If you need to use a 100 foot cord, it must be 14 gauge or better. DO NOT use cords longer than 100 feet.
6. DO NOT USE A DAMAGED CORD OR PLUG. If the unit is not working as it should, or if it has been dropped, damaged, left outdoors, or exposed to water, return it to an authorized warranty service center for inspection.
7. Do not pull or carry the vacuum by the cord or use the cord as a handle. Do not close a door on the cord or pull the cord around sharp edges or corners. Do not run over the cord. Keep the cord away from heated surfaces.
8. DO NOT pull on the cord to unplug. Grasp the plug at the outlet and pull.
9. Do not handle the plug or vacuum with wet hands.
10. Do not put any objects into openings. Keep hair, loose clothing, fingers, and all parts of the body away from openings and moving parts. Long hair should not hang over or near the unit.
11. Do not vacuum flammable or combustible materials or anything that is burning or smoking, such as cigarettes, matches, or hot ashes.
12. Turn off the unit before unplugging.
13. Connect to a properly grounded outlet only.
14. Use with care when cleaning stairs.

SAVE THESE INSTRUCTIONS

Violation of any of these instructions may void any and all warranties.

OPERATION

PREPARING THE SSS SPEEDSTER 1000 AND SSS SPEEDSTER 600 FOR OPERATION

1. Unlatch and remove the top cap and pull out the cloth filter. Check to see that the dome filter has not shifted during shipping (Figure A). Reinstall the cloth filter, making sure that the lip of the filter completely covers the rim of the vacuum (Figure B).



Figure A

2. Install a Intercept Micro Filter (if there is not one already installed) by sliding the gasket of the Intercept Micro Filter over the inlet on the inside of the top cap (Figure C). At the beginning of each shift, the filters should be checked. Empty or replace as necessary.

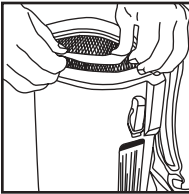


Figure B

NOTE: Never use a Intercept Micro Filter without the cloth filter. (The cloth filter's rubber gasket provides the seal.)

3. Replace the cap, making sure that the latches catch correctly. Push the hose into the cap opening.
4. Twist the aluminum wand into the hose (Figure D). Check hose cuffs at both ends to make sure that they are tight.
5. Loosen the shoulder straps and waist belt. In an open area, lift the vacuum by one shoulder strap and slide your free arm into the other strap (Figure E).
6. Fasten the waist belt snugly and make sure the weight is resting comfortably on your hips (Figure F).
7. Check the wear on the cord by the vacuum body and at the plug. Place the extension cord between the waist belt's strap and padded area to signal you if you have run out of cord while vacuuming (Figure G).

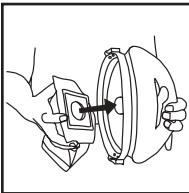


Figure C

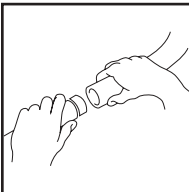


Figure D



Figure E

8. To attach tools to a 1 1/2" aluminum wand, LOOSEN the plastic nut at the end of the wand, insert the tool, and retighten the nut. To ensure the copper ring stays in place, NEVER remove the nut.

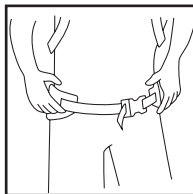


Figure F

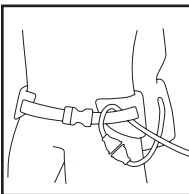


Figure G

ELECTRICAL CORD CARE

NEVER stretch the cord tightly between the vacuum and the outlet. A cord that is stretched or pulled will not function properly and creates a danger.

After vacuuming, unplug the extension cord at both ends and wind it up loosely (Figure J). DO NOT wind the cord up by wrapping it around your hand and elbow.

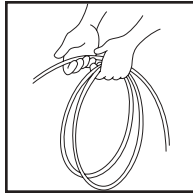


Figure J

PROPER STORAGE

When the vacuum is not in use, it should be stored in a dry place.

PROPER VACUUMING MOTION FOR LARGE AREAS

1. Begin with the wand parallel to your body.
2. Draw the top of the wand in toward your waist and twist at the waist walking backward or forward (a side-to-side motion) (Figure K).
3. The motion is similar to mopping and keeps the upper body and arms from tiring.

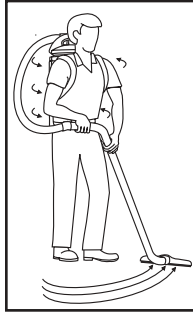


Figure K

ERGONOMICS

- With the SSS Speedster 600 and SSS Speedster 1000, the weight of the vacuum should be carried on the operator's hips and be evenly distributed. The padded waist belt or waist and shoulder straps are adjustable for a custom fit.
- On the SSS Speedster 600, and SSS Speedster 1000 the ventilated backplate helps keep the operator cool.
- The on/off switch is conveniently placed for easy access on the waist belt of the backpack vacuums.
- Use the proper attachments for the job. Your Triple S distributor has attachments to perform most jobs without requiring that the operator bend over or get into difficult positions.

CARING FOR YOUR VACUUM

1. Every time you finish vacuuming, shake out the cloth filter, and wipe the inside and outside of the vacuum with household cleaning agent.

PREVENTIVE MAINTENANCE

WARNING: The following information is for use by qualified service personnel only and provides guidance for troubleshooting and maintenance.

- UNPLUG the vacuum when working on the motor or any electrical part.
- CHECK the condition of all electrical cords before each use.
- CHECK the carbon brushes on the motor every six months and replace any brush worn down to 1/2" in length. If carbon brushes are not checked and replaced (if necessary) every six months, motor warranty will be void.
- DO NOT lubricate the motor; it is equipped with sealed bearings.

TROUBLESHOOTING

1. If the vacuum will not operate, check:
 - a. The power supply cord at the wall outlet.
 - b. The power supply cord at the vacuum.
 - c. That the switch is in the "on" position and functioning properly.
2. If the pigtail (18" power cord) is getting warm, check to see that the extension cord does not exceed a length of 50 feet at 16 gauge or 100 feet at 14 gauge. Longer cords will overheat and damage the vacuum.
3. If the exhaust that comes out of the bottom of the vacuum is warmer than usual, check, clean or replace all four filters.
4. If the power switch fails, check the circuit breaker. If that is not the problem, see a Triple S Warranty Station.
5. If loss of suction occurs:
 - a. Check that debris is not plugging the hose, wand, and/or floor tool.
 - b. Check, clean or replace both Intercept Micro Filter and cloth filters.
 - c. Check that the hose cuffs are fitting tightly on the hose and are not cracked.
 - d. Check that the cap is properly attached to the vacuum body.

FILTER MAINTENANCE

1. Check the Intercept Micro Filter EACH and EVERY time you start and finish vacuuming. A clogged and dirty filter restricts airflow, resulting in reduced suction, overheating and possible damage to the vacuum.
2. While vacuuming throughout a building, stop every two hours or as needed to check the Intercept Micro Filter. Replace with a new Intercept Micro Filter when necessary.

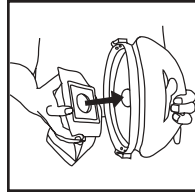


Figure A

NOTE: Lift both Intercept Micro Filter and cloth filters out at the same time to avoid ripping the Intercept Micro Filter, especially if it is full.

Install a Intercept Micro Filter inside the cloth filter. To install a Intercept Micro Filter on the SSS Speedster 600 or SSS Speedster 1000, slide the gasket of the Intercept Micro Filter over the inlet on the inside of the top cap, then replace the cap (Figure A).

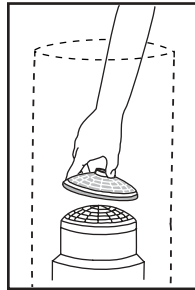


Figure B

3. Once a month (or more often if necessary) hand or machine wash the cloth filter and let it LINE DRY. (Do not put it in the dryer.)
4. Once a week (or more often if needed) clean the dome filter, located inside the vacuum underneath the Intercept Micro Filter and cloth filters (Figure B).
 - a. Pull the top piece of the dome filter off and remove the foam media (Figure C). Shake it out, rinse it, and let it air dry thoroughly.
 - b. Before the next use, return the foam media to the dome filter. Replace with new foam media if necessary.
 - c. Firmly snap the top piece of the dome filter into place.

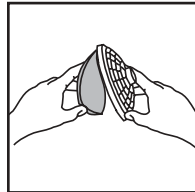
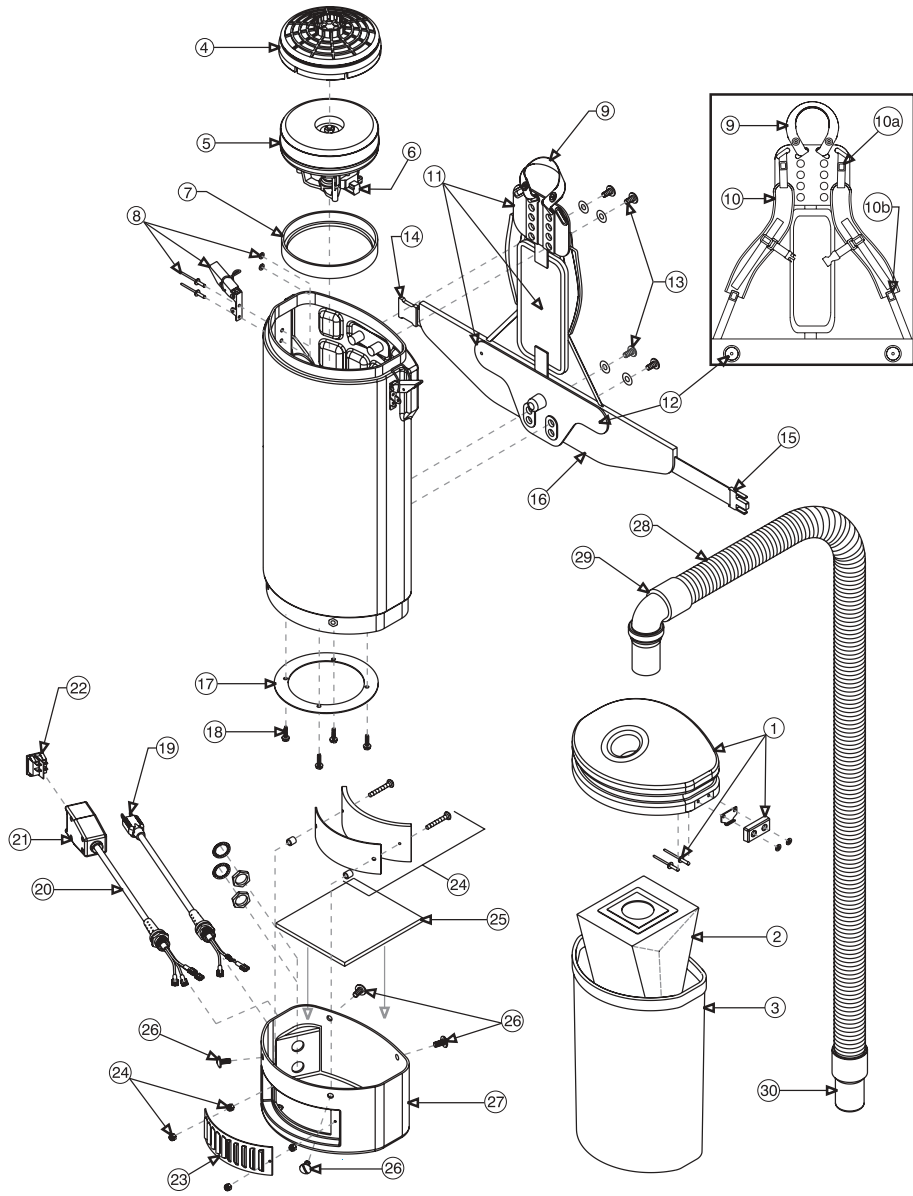


Figure C

NOTE: If using a high filtration disc in place of the foam media, check it every two to three weeks. When the disc becomes discolored, replace it with a new disc. The life of the high filtration disc will depend greatly on the use and care of the Intercept Micro Filter and cloth filter.

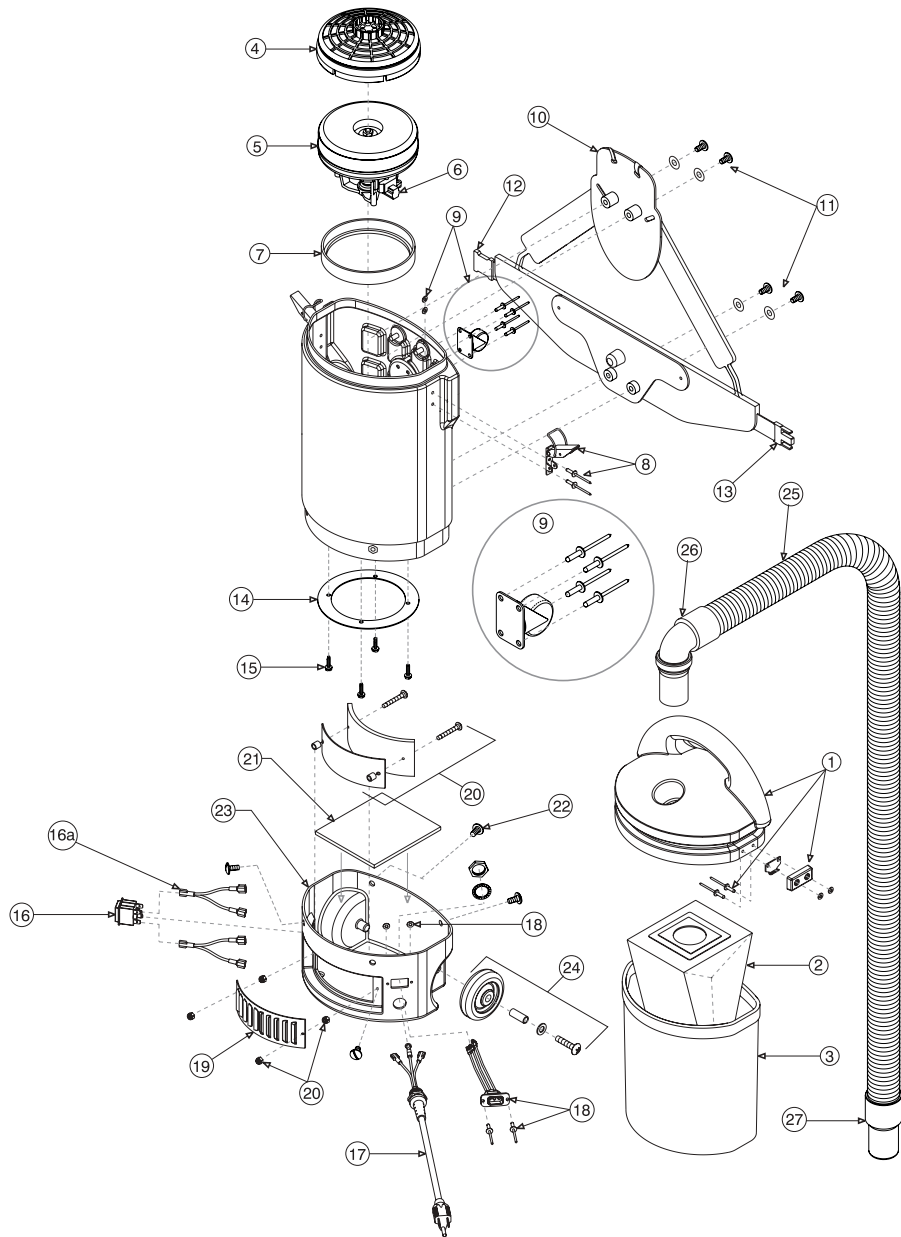
SSS SPEEDSTER 1000 ASSEMBLY



SSS SPEEDSTER 1000 PARTS LIST

ITEM	ORDER#	DESCRIPTION	QUANTITY
1	103185	Lid Assembly: 1 Lid, 2 Latch Strikes, 2 Bumpers, 4 Pop Rivets, 4 Washers	1 set
2	56004	580 sq. in. Intercept Micro Filter	10/pack
3	103176	Cloth Filter	1 each
4	100030	Dome Filter w/Foam Media	1 set
	100343	Foam Media for Dome Filter	1 each
	101220	High Filtration Disc (Optional)	2/pack
5	103329	1340 Watt Motor/Fan w/Crimps	1 each
6	101720	Replacement Carbon Brush Set for 1340 Watt Motor	1 set
7	103236	Motor Seal	1 each
8	103270	Draw Latch Assembly: 1 Latch, 2 Rivets, 2 Washers	1 set
9	101737	Carry Handle w/Rivet and Washer Set	1 set
10	100356	Shoulder Strap Assembly: 2 S-shaped Shoulder Straps w/Sternum Strap and 2 Buckles	1 set
10a	100358	Shoulder Strap Plastic Adjustment Buckle (Top)	1 each
10b	100357	Shoulder Strap Plastic Adjustment Buckle (Bottom)	1 each
11	103257	Backplate Assembly (2 Pieces) w/Center Pad	1 each
12	100375	Barrel Nut Connection Set for Backplate (Replacement)	1 set
13	100716	Backplate (Black) Connection Set: 4 Bolts w/Washers	1 set
14	100363	Waist Belt Keeper	1 each
15	100364	Waist Belt Latch	1 each
16	100359	Waist Belt	1 each
	103166	Two-piece Backplate System Complete (9,10,10a,10b,11,12,13,14,15)	1 set
17	102181	Motor Plate	1 each
18	100378	Motor Plate Connection Screw Set: 4 Screws	1 set
19	103334	Power Cord (18" 16/3) Assembly Complete w/Strain Relief w/Locknut and Washer	1 set
20	101610	Switch Cord Assembly Complete w/Strain Relief, Switch and Box	1 set
	101714	Switch Cord w/Crimps	1 each
21	101472	Switch Box w/Velcro® and Screws	1 set
22	100743	Double Pole On/Off Switch	1 each
23	102052	Exhaust Louver	1 each
24	103274	Sound/Exhaust Assembly: 2 Nylock Nuts, 2 Hex Nuts w/Washers, 2 Screws, 1 Small Felt Acoustic Insulator, 1 Exhaust Bracket, 2 Nylon Spacers	1 set
25	102510	Acoustic Insulator, Felt, Large	1 each
26	103275	Bottom Cap Screw Kit: 4 Screws	1 set
27	103169	Bottom Cap (Black)	1 each
28	103048	Static Dissipating Hose w/Cuffs	1 each
29	101928	Replacement Cuff w/Swivel Elbow (Black) 1 1/2"	1 each
30	100694	Replacement Swivel Cuff (Black) 1 1/2"	1 each
	101678	60' Extension Cord (Not shown)	1 each

SSS SPEEDSTER 600 ASSEMBLY



SSS SPEEDSTER 600 PARTS LIST

ITEM	ORDER#	DESCRIPTION	QUANTITY
1	103290	Lid Assembly: 1 Lid, 2 Latch Strikes, 2 Bumpers, 4 Pop Rivets, 4 Washers	1 set
2	56002	454 sq. in. Intercept Micro Filter	10/pack
3	102063	Cloth Filter	1 each
4	100030	Dome Filter w/Foam Media	1 set
	100343	Foam Media for Dome Filter	1 each
	101220	High Filtration Disc (Optional)	2/pack
5	103330	928 Watt Motor/Fan w/Crimps	1 each
6	100424	Replacement Carbon Brush Set for 928W Motor	1 set
7	103236	Motor Seal	1 each
8	103270	Draw Latch Assembly: 1 Latch, 2 Rivets, 2 Washers	1 set
9	103271	Swivel Caster Assembly: 1 Caster, 4 Rivets, 4 Washers	1 set
10	103393	Two-piece Backplate System Complete	1 set
	100356	Shoulder Strap Assembly: 2 Shoulder Straps w/Sternum Strap, 2 Buckles	1 set
	100358	Shoulder Strap Plastic Adjustment Buckle (Top)	1 each
	100357	Shoulder Strap Plastic Adjustment Buckle (Bottom)	1 each
	103283	Waist Belt	1 each
	100375	Barrel Nut Connection Set (Replacement)	1 set
11	103282	Backplate Connection Set: 4 Screws (2 Long/2 Short), 4 Washers	1 set
12	100364	Waist Belt Keeper	1 each
13	100363	Waist Belt Latch	1 each
14	102181	Motor Plate	1 each
15	100378	Motor Plate Connection Screw Set: 4 Screws	1 set
16	103198	Double Pole On/Off Switch	1 each
16a	101760	Wire Splitter	1 each
17	103181	Power Cord (18" 16/3) Assembly Complete w/Strain Relief w/Locknut and Washer	1 set
18	103273	Powerhead Receptacle Assembly: 1 Three-wire Receptacle, 2 Rivets, 2 Washers	1 each
19	102052	Exhaust Louver	1 each
20	103274	Sound/Exhaust Assembly: 2 Nylock Nuts, 2 Hex Nuts w/Washers, 2 Screws, 1 Small Felt Acoustic Insulator, 1 Exhaust Bracket, 2 Nylon Spacers	1 set
21	102510	Acoustic Insulator, Felt, Large	1 each
22	103275	Bottom Cap Screw Kit: 4 Screws	1 set
23	103182	Bottom Cap (Black) w/Wheel Wells	1 each
24	103278	Rear Wheel Assembly: 2 Wheels, 2 Axle Sleeves, 2 Axle Washers, 2 Axle Screws	1 set
25	103048	Static Dissipating Hose w/Cuffs (Black) 1 1/2"	1 each
26	101928	Replacement Cuff w/Swivel Elbow (Black) 1 1/2"	1 each
27	100694	Replacement Swivel Cuff (Black) 1 1/2"	1 each
	101678	60' Extension Cord (Not shown)	1 each

LIMITED WARRANTY

SSS Speedster commercial backpack vacuums are warranted by the manufacturer to be free from defects in materials and workmanship arising under normal usage and care for the following terms:

The warranty period is for **three (3)** years or 1400 total hours of operation (whichever comes first) on all parts, labor and motors, and **lifetime** on all molded body parts.

This warranty applies from the date of purchase only when the vacuum cleaner is used in accordance with the manufacturer's instructions.

This warranty does not apply to:

- Normal wear parts that require replacement under normal use including, but not limited to: hoses, filters, switches, carbon motor brushes and attachments.
- Ordinary wear and tear and blockages which occur during use.
- Damage due to unauthorized or improper use, modification, alteration, service or repair.

All vacuum motors are guaranteed for their respective timeframes only if the following carbon brush maintenance schedule is completed and proof of maintenance provided:

1. **Carbon brushes** on the vacuum motor **replaced** after the **first 800 hours** of operation by an authorized warranty service center.
2. **Carbon brushes replaced** again after the **next 400 hours** of operation by an authorized warranty service center.
3. **Carbon brushes replaced** again after the **next 200 hours** of operation by an authorized warranty service center.

If the above schedule is not followed, the vacuum motor armature will wear out prematurely and will void the warranty coverage.