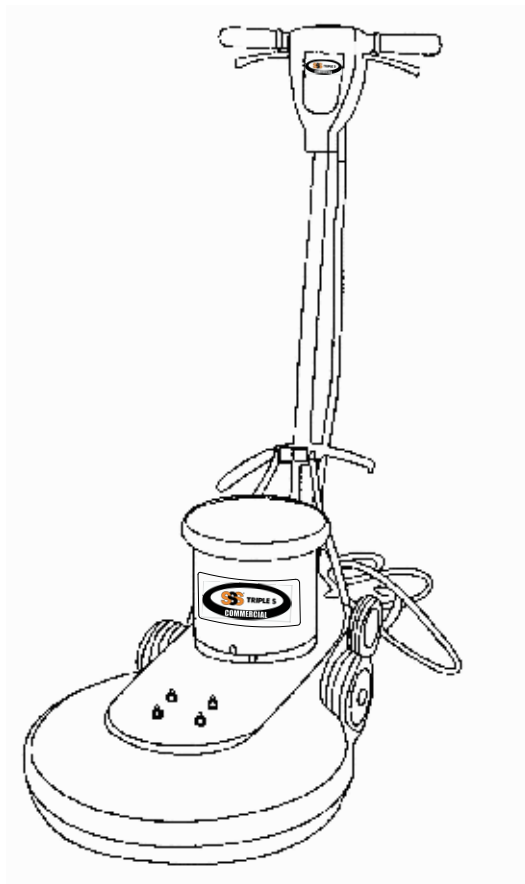




OWNER'S MANUAL

IMPORTANT: READ OWNER'S MANUAL CAREFULLY



MODEL :

CHEETAH 1500

SS **TRIPLE S**
NATIONWIDE
SANITARY SOLUTIONS
1-800-323-2251
www.triple-s.com

FOR YOUR CONVENIENCE, RECORD THE FOLLOWING
IMPORTANT INFORMATION

MODEL: _____

SERIAL NUMBER: _____

DATE PURCHASED: _____

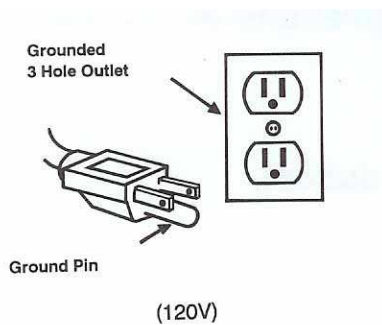
PURCHASED FROM: _____

TABLE OF CONTENTS

| | |
|---|-------------|
| Safety Precautions | 3 |
| Machine Operation | 4 |
| Machine Maintenance & Storage | 4 |
| Handle Release Assembly Instructions | 5 |
| Parts Lists | 6-10 |
| Wiring Diagram | 11 |
| Warranty Policy | 12 |

SAFETY PRECAUTIONS

!!! This machine must be grounded! Grounding provides the path of least resistance for electrical current. To reduce the risk of electrical shock should the machine malfunction, the machine has a special grounding plug. Do not remove the ground pin under any circumstances!



This machine is intended for commercial use. It is constructed for use in an indoor environment and is not intended for any other use. Use only recommended accessories.

All operators shall read, understand and exercise the following safety precautions:

- 1) Do not operate machine:
 - Unless trained and authorized.
 - Unless you have read and understand operators manual.
 - In flammable or explosive areas.
 - With damaged cord or plug.
 - If not in proper operating condition.
 - In outdoor areas.
 - In standing water.
 - With the use of extension cords.

- 2) Before operating machine:
 - Make sure all safety devices are in place and operate properly.
- 3) When using machine:
 - Only use approved burnishing pads.
 - Do not run machine over cord.
 - Do not pull machine by cord or plug.
 - Do not pull cord around sharp edges or corners.
 - Ensure the dust collection bag is in place and is tightly sealed to the machine.
 - Turn power switch to "off " prior to unplugging machine.
 - Do not unplug by pulling on the cord.
 - Do not stretch cord.
 - Do not handle plug with wet hands.
 - Keep cord away from heated surfaces.
 - Do not pick up burning or smoking debris such as cigarettes, matches or hot ashes.
 - Report machine damage or faulty operation immediately.
- 4) Before leaving or servicing machine:
 - Turn off machine.
 - Unplug cord from outlet.
- 5) When servicing machine:
 - Unplug cord from outlet.
 - Use manufacturer supplied or approved replacement parts.



To avoid electrical shock, please replace the power cord immediately if any damage is being detected. The replacement must be performed only by an authorized person.

Operation of High Speed Floor Machine

- * **READ OPERATORS MANUAL THOROUGHLY PRIOR TO OPERATING OR SERVICING THIS MACHINE.**

GENERAL USE

1. Remove any obstructions or other obstacles in the area which is to be cleaned.
 2. Place the handle in the upright position and tilt machine back until handle rests on the floor
- * **Be sure the machine is not plugged into an outlet**
3. Attach the pad to the machine by first unscrewing the male end of the "big mouth" from the flexible pad driver. Place the approved pad on the pad driver, place the male end of the "big mouth" into the center hole of the pad, and tighten the "big mouth" firmly to the pad driver.
 4. Place machine back into its upright position.
 5. Plug power cord into a grounded outlet.
- * **Never use an extension cord in conjunction with the standard power cord.**
6. The handle height may be adjusted by lifting up the compression handle which is located on the right side of the handle tube about 1 foot above floor level. Release the compression handle and adjust handle to safe operating height, then push back down on the compression handle to lock the handle in operating position.
 7. To start the machine, press the red safety button on the top of the upper switch housing, and then squeeze either of the operating triggers. (the safety button must be depressed prior to squeezing the operating triggers.)
 8. When the machine is in operation, both hands should be placed on the switch housing (upper handle).

9. To stop the machine at any time, simply release the operating trigger(s) and the machine will stop automatically.

MAINTENANCE

To keep the machine performing well for many years, please follow the following maintenance procedures.

- * **Always confirm that the machine is unplugged prior to performing any maintenance or repairs.**
1. Unplug machine as soon as you are done using it.
 2. Clean the outside of the machine with a mild cleaner.
 3. Check power cord for any damage. If damage is detected, replace power cord immediately.
 4. Lubricate wheels with a water resistant lubricant once a month.
 5. Check machine for loose or missing nuts and bolts, and replace as necessary.
 6. If the machine is used in a dusty environment, you may remove the motor cover and blow the motor clean with compressed air. This will ensure proper ventilation, and allow the motor to run cooler.

STORAGE

1. Unplug machine from power source and wrap cord on handle.
2. Tilt machine so the pad is not touching the floor.
3. Store machine in upright position and in a dry area.

Handle Release Assembly Instructions

STEP 1

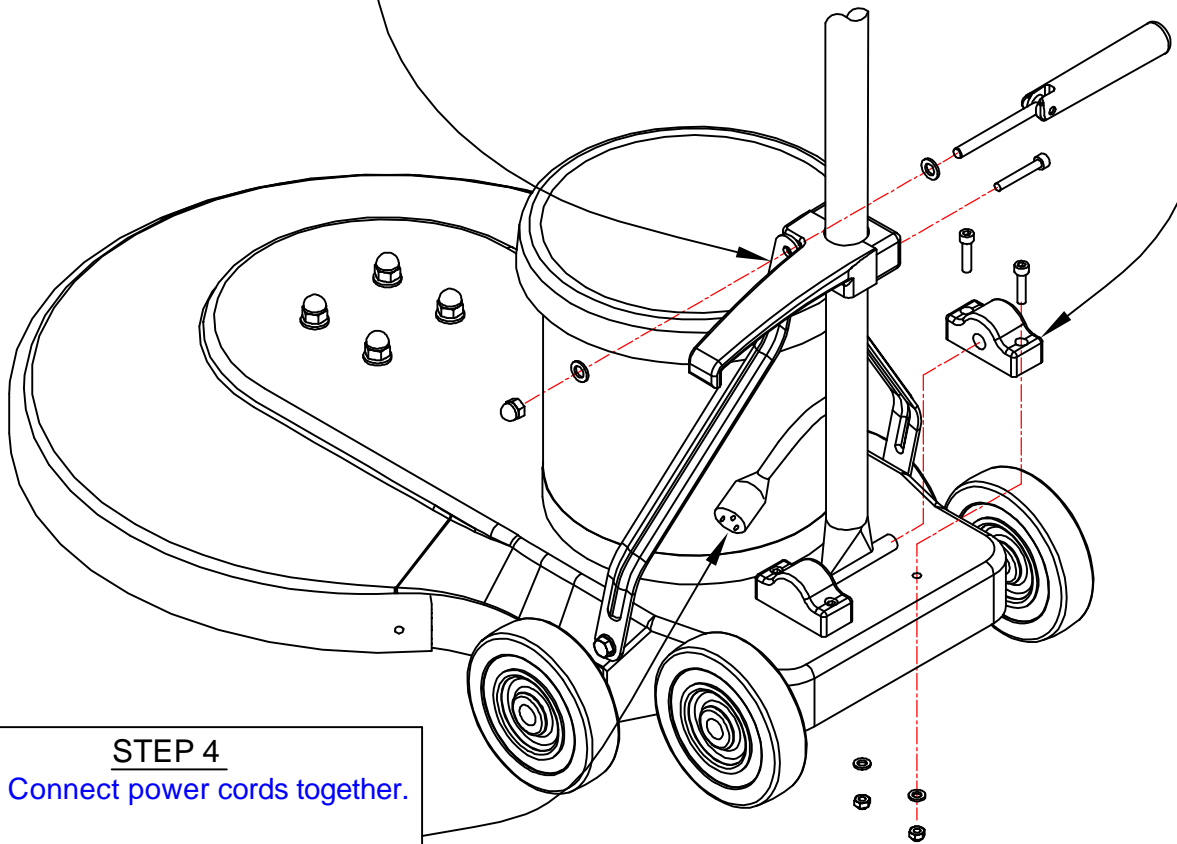
- 1) Remove nut and spacer from handle bracket assembly.
- 2) Push the two handle brackets forward so they lean against the motor.

STEP 2

- 1) Remove handle clamp blocks with 5mm hex head
- 2) Place handle assembly into handle clamp blocks
- 3) Re-attach the blocks to the base with 5mm hex head

STEP 3

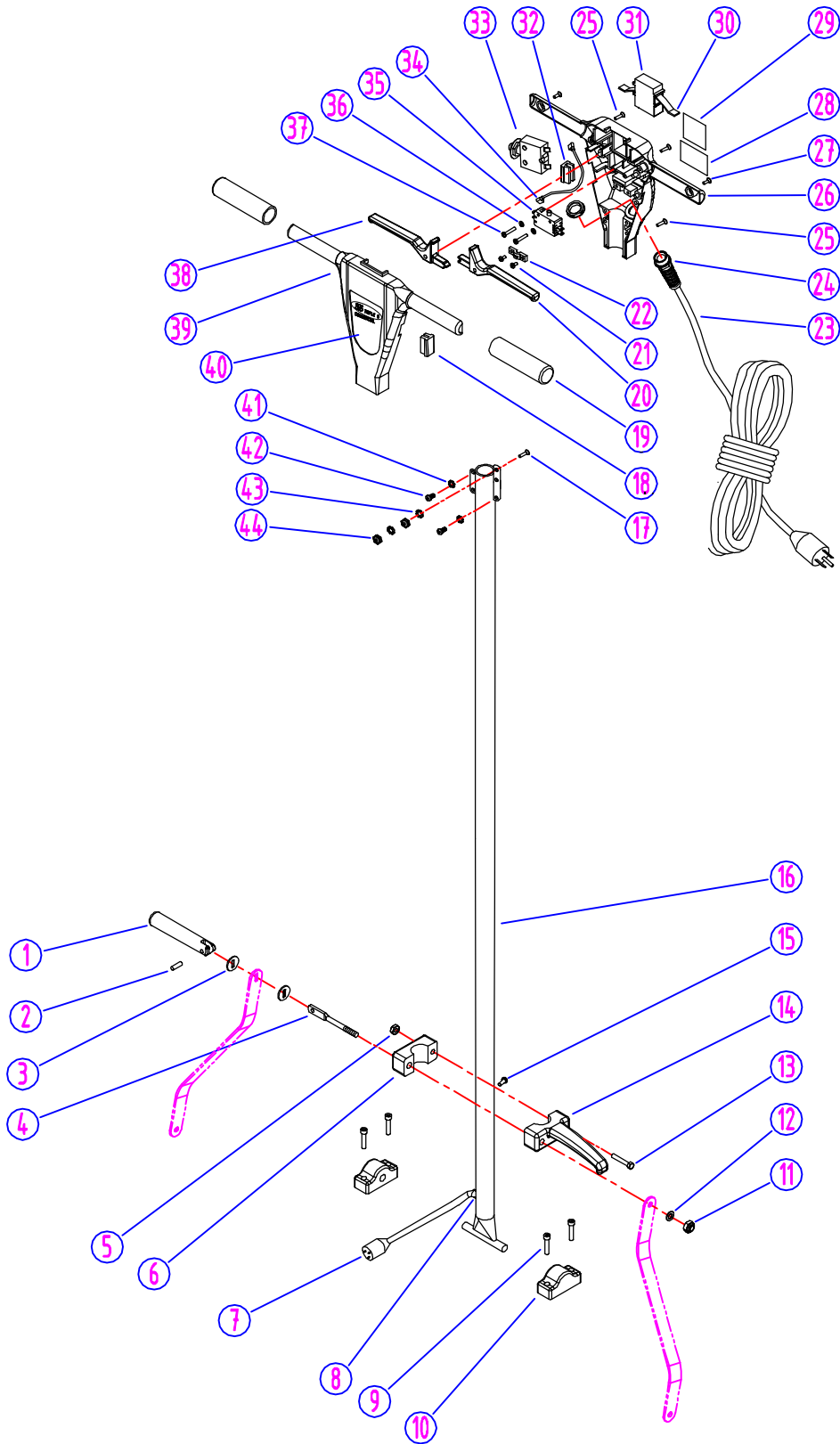
- 1) Place cord wrap assembly (2 pieces) in place, and snug them together with 6mm hex bolt. (actual cord wrap faces to the left of the machine when you are standing behind it)
- 2) Assemble hardware in the following order spacer, left handle bracket, nylock nut. (do not over tighten nylock nut, Only tighten it enough to hold handle in place when compression lever is in down position)



STEP 4

- 1) Connect power cords together.

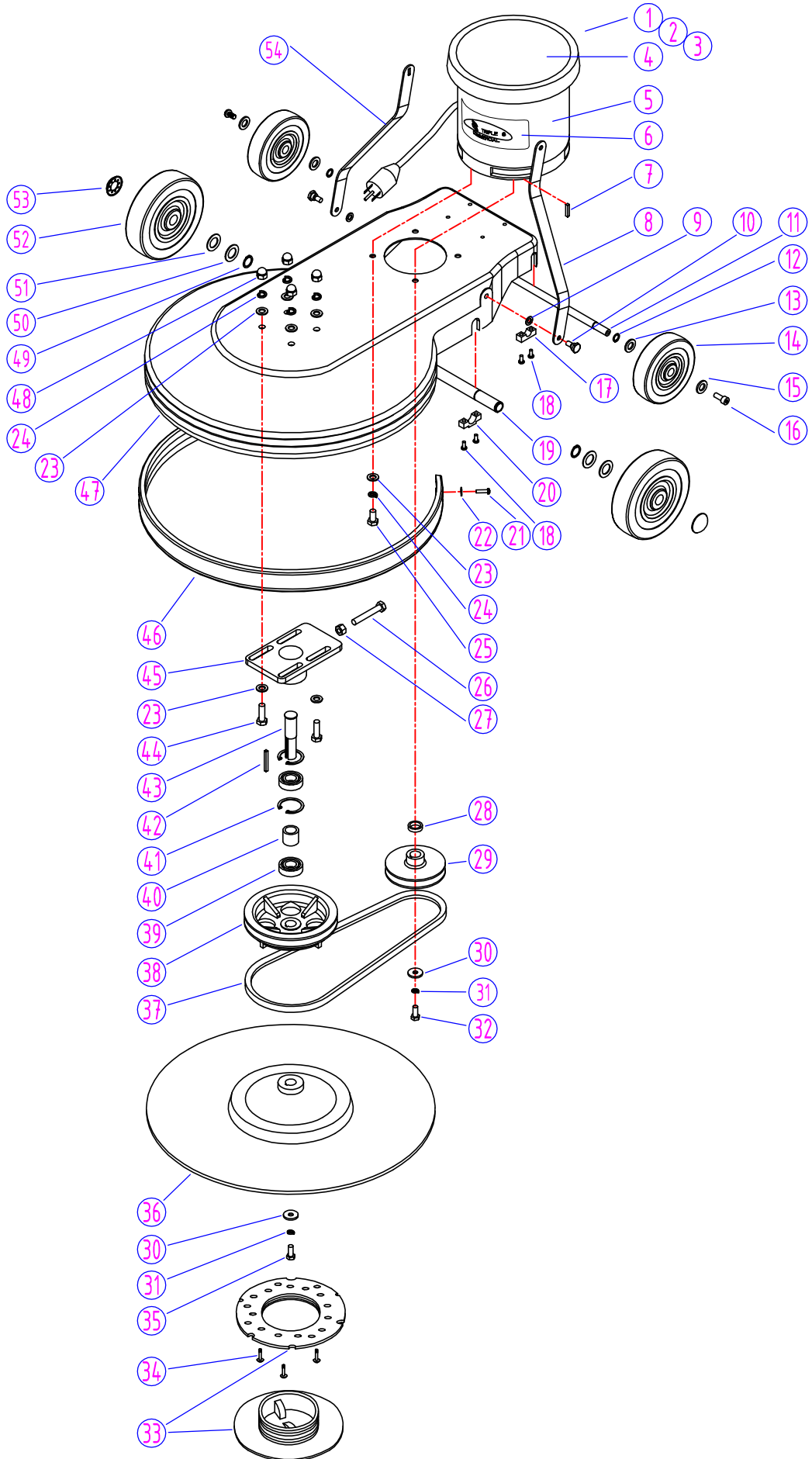
HANDLE GROUP



HANDLE GROUP

| DIA NO | PART NUMBER | DESCRIPTION | NO REQ'D |
|---------------|--------------------|--|-----------------|
| 1 | VF30016 | HANDLE RELEASE | 1 |
| 2 | VF30017 | SCREW PIN, HANDLE RELEASE | 1 |
| 3 | VF30018 | WASHER, PLAIN, HANDLE RELEASE | 2 |
| 4 | VF30015 | BOLT, HANDLE RELEASE | 1 |
| 5 | VF13503 | NUT, M8, NYLON INSERT | 1 |
| 6 | VF30014 | COVER, HOOK, CABLE | 1 |
| 7 | VF45125 | CORD, HANDLE, 14/3C | 1 |
| 8 | VF50120A | GROMMET | 1 |
| 9 | VF14053 | HEX SOCKET SCREW, M6x25 | 4 |
| 10 | VF30011BD | CLAMP BLOCK, HANDLE | 2 |
| 11 | VF13504 | NUT, M10, NYLON INSERT | 1 |
| 12 | VF13517 | WASHER, PLAIN, $\phi 10 \times \phi 20 \times 2.5$ | 1 |
| 13 | VF14114 | SCREW, M8 x 55, HEX | 1 |
| 14 | VF30013 | HOOK, CABLE | 1 |
| 15 | VF13493 | SCREW, M6x10, HEX SOCKET | 1 |
| 16 | AS321207 | TUBE HANDLE | 1 |
| 17 | AS22002 | SCREW, M5x16 | 1 |
| 18 | GV40238H | COVER, LEVER, SOLUTION | 1 |
| 19 | VF48310TR | HANDLE GRIP | 2 |
| 20 | AS22005S | LEVER, LEFT, SWITCH | 1 |
| 21 | VV13661 | SCREW, M4x12 | 2 |
| 22 | VF48309 | CLAMP BLOCK | 1 |
| 23 | VF45119U | CORD, POWER SUPPLY | 1 |
| 24 | AS22009 | STRAIN RELIEF, CORD, POWER SUPPLY | 1 |
| 25 | GT13009 | SCREW, M5x30 | 5 |
| 26 | AS312209 | REAR COVER, HANDLE | 1 |
| 27 | GT13008 | SCREW, M5x20 | 2 |
| 28 | VF52024TR | SERIAL TAG | 1 |
| 29 | VF40994 | READ MANUAL LABEL | 1 |
| 30 | GV40218 | SPRING, SAFETY BUTTON | 1 |
| 31 | GV40209 | SAFETY BOTTON | 1 |
| 32 | AS312203 | COVER, LEVELING HANDLE | 1 |
| 33 | VF99010C | CIRCUIT BREAKER, 17AMPS | 1 |
| 34 | VF45124A | JUMP WIRE | 1 |
| 35 | VF44203 | SWITCH ASSY | 1 |
| 36 | VF13511 | WASHER, LOCK, INTERNAL TOOTH | 2 |
| 37 | VF14212 | SCREW, M3x25 | 2 |
| 38 | AS22004S | LEVER, RIGHT, SWITCH | 1 |
| 39 | AS312208 | FRONT COVER, HANDLE | 1 |
| 40 | GV40226TR | LABEL | 1 |
| 41 | VF13604 | EXTERNAL TOOTH WASHER, $\phi 5$ | 4 |
| 42 | VF14222 | SCREW, M5x12 | 4 |
| 43 | AS22003 | TOOTH WASHER, $\phi 5$ | 2 |
| 44 | VV13633 | NUT, M5 | 2 |

BASE GROUP



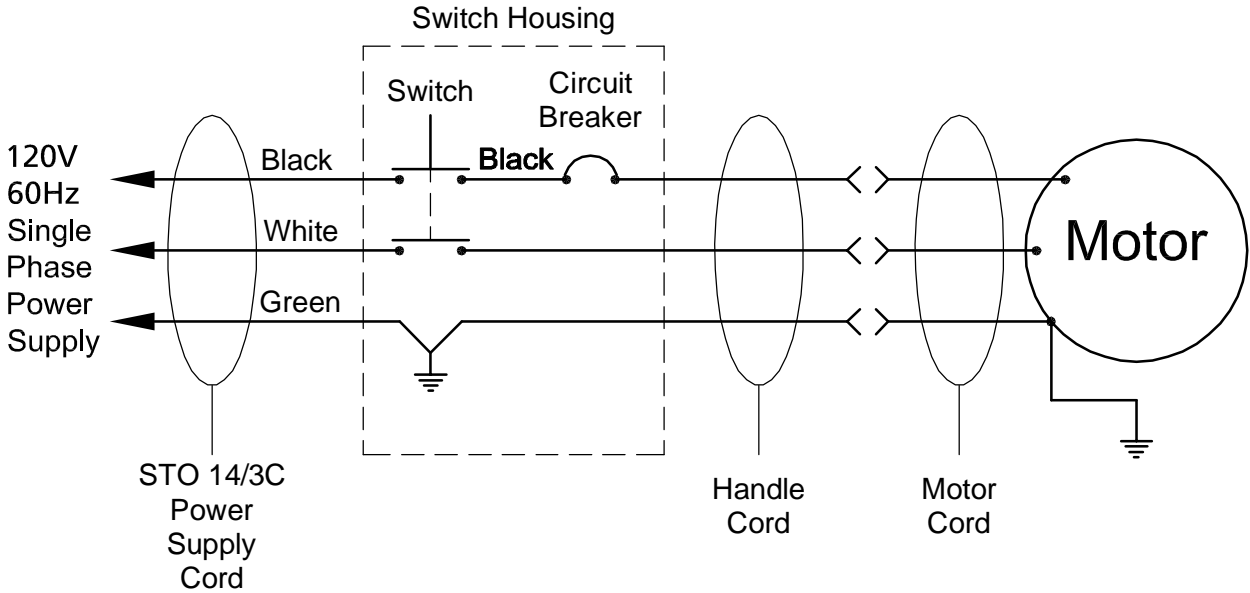
BASE GROUP

| DIA NO | PART NUMBER | DESCRIPTION | NO REQ'D |
|---------------|--------------------|---|-----------------|
| 1 | ZD41000 | MOTOR,120V | 1 |
| 2 | VF99926-2 | CARBON BRUSH | 1 |
| 3 | VF44204 | RECTIFIER | 1 |
| 4 | ZD41306 | MOTOR COVER | 1 |
| 5 | VF53110 | LABEL | 1 |
| 6 | VF41079TR | LABEL, LOGO | 1 |
| 7 | ZD40205 | KEY, MOTOR | 1 |
| 8 | VF53112 | BRACKET, LEFT | 1 |
| 9 | VF13514 | WASHER, PLAIN, $\phi 8 \times \phi 16$ | 2 |
| 10 | VF53107 | HEX SCREW, BRACKET | 2 |
| 11 | VF52011A | AXLE, TRANSPORT | 1 |
| 12 | VF13520 | RETAINING RING, EXTERNAL, $\phi 12$ | 2 |
| 13 | VF50119 | WAVING WASHER, $\phi 12$ | 2 |
| 14 | VF48202 | WHEEL, 5" | 2 |
| 15 | VF13666 | WASHER, PLAIN, $\phi 12$ | 2 |
| 16 | VF44012 | SCREW, M5 x 12.7 | 2 |
| 17 | GV40235 | CLAMP BLOCK, AXLE | 2 |
| 18 | VV13621 | SELF-TAPPING SCREW, ST5x20 | 8 |
| 19 | VF52010R | FRONT AXLE | 1 |
| 20 | VF47038 | CLAMP BLOCK, AXLE | 2 |
| 21 | VA13474 | SCREW, M5x16 | 2 |
| 22 | VF13474A | WASHER, PLAIN, $\phi 5 \times \phi 16$ | 2 |
| 23 | VF13517 | WASHER, PLAIN, $\phi 8$ | 12 |
| 24 | VF13518 | WASHER, LOCK, $\phi 8$ | 8 |
| 25 | VF13497 | SCREW, 3/8"-16 | 4 |
| 26 | VF14009 | HEX SCREW, M10x65 | 1 |
| 27 | VF14005 | NUT, M10 | 1 |
| 28 | VF52008 | SPACER | 1 |
| 29 | VF52009G | DRIVING PULLEY | 1 |
| 30 | VF52021 | WASHER, PLAIN, $\phi 8 \times \phi 30 \times 5$ | 2 |
| 31 | VF13519 | WASHER, LOCK, $\phi 8$ | 2 |
| 32 | VF14008 | SCREW, 5/16"-18, HEX | 1 |
| 33 | VF99003A | BIG MOUTH | 1 |
| 34 | VA13484 | ST4x12, PH | 3 |
| 35 | GT13018 | SCREW, M8x30, HEX | 1 |
| 36 | VF99024D | PAD HOLDER | 1 |
| 37 | VF14079B | VEE BELT | 1 |
| 38 | VF52004A | DRIVEN PULLEY | 1 |

BASE GROUP

| DIA NO | PART NUMBER | DESCRIPTION | NO REQ'D |
|-------------------|------------------------|-------------------------------------|---------------------|
| 39 | VF14075 | BEARING, 6004 2RS | 2 |
| 40 | VF52006 | SPACER, BEARING | 1 |
| 41 | VF14003 | RETAINING RING, INTERNAL, ϕ 42 | 2 |
| 42 | VF52001 | KEY, DRIVEN SHAFT | 1 |
| 43 | VF52005 | DRIVEN SHAFT | 1 |
| 44 | VF14007 | HEX SCREW, M10x32 | 4 |
| 45 | VF52007 | MOUNTING PLATE, DRIVEN SHAFT | 1 |
| 46 | AS321203TR | BUMPER, FRAME | 1 |
| 47 | AS321201TP | FRAME | 1 |
| 48 | VF14059 | CAP NUT, M10 | 4 |
| 49 | VF14004 | RETAINING RING, EXTERNAL, ϕ 19 | 2 |
| 50 | VF50123 | WASHER, ϕ 19 | 2 |
| 51 | VF47027 | WAVING WASHER, ϕ 19 | 2 |
| 52 | VF47055N | WHEEL, 160MM | 2 |
| 53 | VA96851 | CAP, FRONT AXLE | 2 |
| 54 | VF53113 | BRACKET, RIGHT | 1 |

Wiring Diagram





Warranty Policy

The warranty terms outlined below are in lieu of any other warranties, either stated or implied, including any implied warranty of merchantability, fitness for a particular purpose or otherwise. Under no circumstances will seller be liable for any loss, damage, expense or consequential damages arising in connection with the use or inability to use this product.

This warranty does not apply to damage or defect caused by accident, misuse, negligence, abuse, fire or to any Triple S product which has been serviced by anyone other than a Triple S authorized service representative. Housings or parts that have become damaged as a result of improper use of the machine are excluded from this warranty. Refer to owner's manual for proper machine use and maintenance. Parts that are expected to wear from normal use and, therefore are not covered under the parts warranty include, but are not limited to: batteries (pro-rated for one year); bearings; belts; brushes; filters; squeegees; switches; and tires.

This warranty commences on the date of purchase of the product by the original end user from an authorized Triple S distributor, subject to proof of purchase. If proof of purchase date is unavailable, the warranty begins 90 days after the sale of the product to an authorized Triple S distributor.

- Subject to the conditions outlined above, the manufacturer warrants the rotationally-molded polyethylene housings and parts on its machines to be free from defects in materials and workmanship, under normal use and service for twelve (12) years to the original purchaser.
- Under this warranty, the manufacturer guarantees the performance of non-polyethylene parts and components on Triple S machines to be free from defects for up to five (5) years to the original end user. Parts replaced under this warranty are guaranteed for the remainder of the original warranty period.
- Labor charges are covered for two (2) full years from the date of purchase for Triple S products, provided an authorized Triple S service provider is used for repair. No travel coverage is extended for cord electric machines.

Product Exceptions & Exclusions: Battery chargers and all accessories are warranted for one year.

Triple S reserves the right to change the warranty policy without notice.